

Why remove hazardous building components?

Some building components encountered as part of the deconstruction process contain hazardous materials and chemicals. When chemicals such as mercury, lead, and cadmium are disposed of as part of the solid waste stream, they may enter the environment and contaminate soil and groundwater. The removal of hazardous building components before the demolition or renovation of a structure is necessary in order to protect human health and the environment.

To obtain information on companies who are licensed to dispose of hazardous building components, please refer to the Environmental Businesses Directory or consult the local Yellow Pages.



For more information on Hazardous Building Components or **to schedule an inspection** call 941-316-1301.

Hazardous Waste Management
8350 Bee Ridge Road
Sarasota, FL 34241

Hazardous Building Components in **Commercial Demolition and Renovation Projects**



Many hazardous building components with the proper planning and foresight can easily be removed prior to demolition or renovation activities. Most of these materials can be recycled at a specialized facility.



Fluorescent Light Bulbs

The most common types of fluorescent bulbs encountered are 4 ft and 8 ft straight lights, u-tubes, circline, and compact fluorescent lamps, all of which contain mercury.

High Intensity Discharge (HID) Lamps

The three major types of HIDS are Mercury Vapor, High Pressure Sodium and Metal Halide.

These lamps contain mercury and are often encountered in security or outdoor lighting applications.

HIDs are also found in indoor, high ceiling work areas such as warehouses and supermarkets.



Thermostats

May contain a mercury switching mechanism. Some thermostats contain multiple glass ampoules of metallic mercury.



Mercury-Bearing Light Switches

These types of switches are no longer manufactured but can still be found in older structures. They are often referred to as "silent switches". Numerous industries also use mercury in various types of floats, pumps and relays.

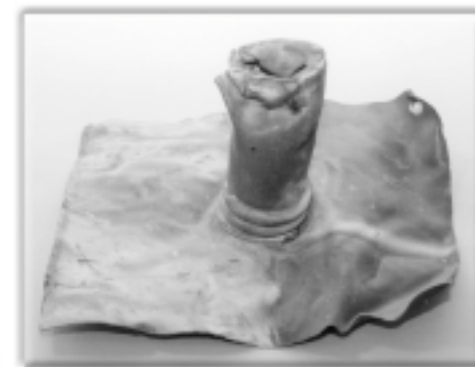


Lighting Ballasts

These items may contain Poly-chlorinated Biphenyls (PCBs) as well as other toxic chemicals such as bis(2-ethylhexyl)ester di(2 ethylhexyl)phthalate (DEHP).

Batteries

Certain types of batteries may contain lead, cadmium, mercury and lithium metals. Batteries can be encountered in emergency lighting, exit signs, security systems, and alarms.



Lead Containing Components

Roof flashings and roof vent pipes mold easily and often contain pure lead. Other sources of lead include pipes used in plumbing, door frames, window sills and lead lined doors or walls from x-ray rooms.

Other Hazardous Materials

Discarded paint, oil, pesticides, cleaners and other chemicals commonly found in closets and accessory structures.



All of these items are banned from landfill disposal and must be properly managed and disposed of according to state and local regulations.